

# MEMBRANE HOUSING

2022

EDITION FOR  
SNOWATE CATALOG

## Snowate

Hengshui Snowate Environmental  
Technology Co., Ltd.



## G80S300/G80S450 SIDE PORT

**Winder-G** series as an exclusively style. G80S FRP membrane housing with working pressure of 300 PSI/450PSI (1-7elements).

The product is widely used in sewage treatment. which have passed ISO9001, ISO 14001, OHSAS 18001 and obtained hygiene licence.



ISO 9001



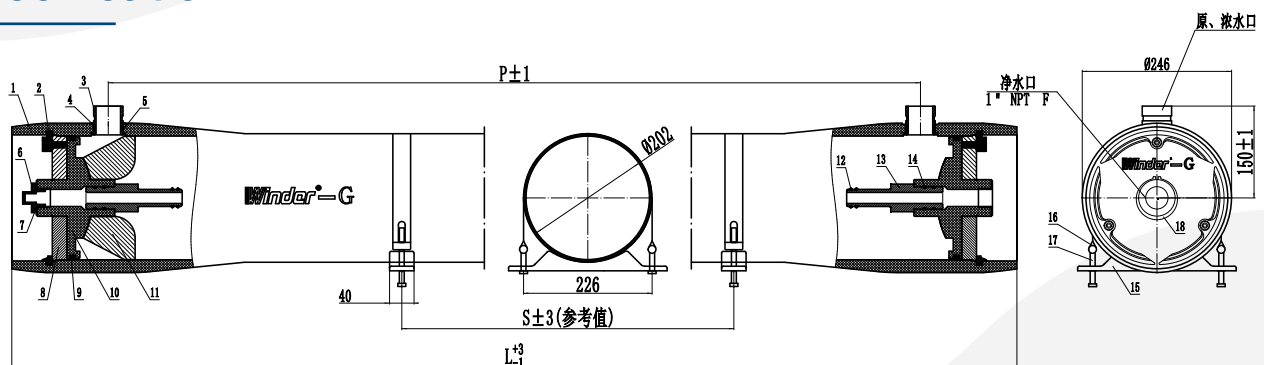
ISO 14001



OHSAS 18001



### Specification



Item	G80S300 ( Side Port)			G80S450( Side Port)		
	L (mm)	P (mm)	S (mm)	L (mm)	P (mm)	S (mm)
1S	1435	1120	715	1435	1120	715
2S	2453	2136	1731	2453	2136	1731
3S	3469	3152	2747	3469	3152	2747
4S	4485	4168	3763	4485	4168	3763
5S	5501	5184	4779	5501	5184	4779
6S	6517	6200	5795	6517	6200	5795
7S	7533	7216	6811	7533	7216	6811

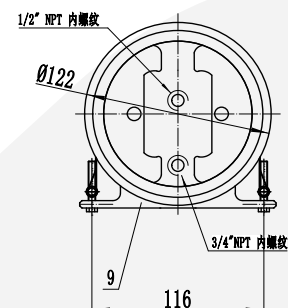
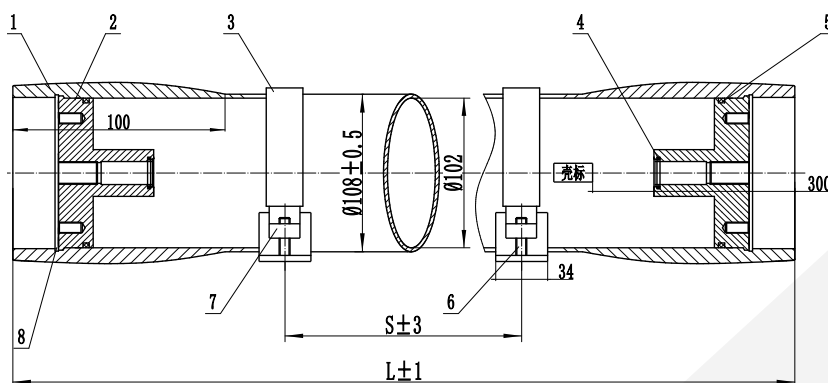
## G40E300 End Port

**Winder-G** is an exclusively style. G80S FRP membrane housing with working pressure of 300 PSI/450PSI (1-7elements).

The product is widely used in sewage treatment, which have passed ISO 9001, ISO 14001, OHSAS 18001 and obtained hygiene licence.



### Specification



G40E300 End Port / Low Pressure		
Item	L (mm)	S (mm)
1S	1135	600
2S	2151	1551

## W80S Series

Low pressure W80S series FRP membrane housing  
300 PSI/450PSI (1-7 elements).

High pressure W80S series FRP membrane housing  
600PSI/1000 PSI/1200 PSI/1500 PSI/1800 PSI/2000 PSI  
(1-7elements).

**Winder** is certified by ASME, can stand more than  
100,000 times of cyclic test & burst test with 6 times of its  
design pressure.

Applied to complex media and have been used in large &  
medium-sized projects at home and abroad since 2008.



## Specification

	8" side port / low pressure	8" side port / high pressure
Model	W80S300/450	W80S600/1000/1200/1500/1800/2000
Design Pressure	300/450PSI	600/1000/1200/1500/1800/2000PSI
Cyclic Test	100,000 times	100,000 times
Burst Pressure	6 times	6 times
Elements Quantity	1-7	1-7
Operating pH Range	pH 3-11	pH 3-11
Operating Temperature	-10°C-66°C (14°F – 150°F)	-10°C-66°C (14°F – 150°F)
Feed/Concentration Port	1.5"/2"/2.5"/3"	1.5"/2"/2.5"/3"
Permeate Port	1"	1"



## W80E Series

Low pressure W80E series FRP membrane housing 300 PSI/450PSI (1-7elements).

High pressure W80E series FRP membrane housing 600PSI/1000 PSI/1200 PSI (1-7elements).

**Winder** is certified by ASME, can stand more than 100,000 times of cyclic test & burst test with 6 times of its designpressure.

Applied to complex media and have been used in large & medium-sized projects at home and abroad since 2008.



Low pressure



High pressure



## Specification

	8" end port / low pressure	8" end port / high pressure
Model	W80E300/450	W80E600/1000/1200
Design Pressure	300/450PSI	600/1000/1200
Cyclic Test	100,000 times	100,000 times
Burst Pressure	6 times	6 times
Elements Quantity	1-7	1-7
Operating pH Range	pH 3-11	pH 3-11
Operating Temperature	-10°C-66°C (14°F – 150°F)	-10°C-66°C (14°F – 150°F)
Feed/Concentration Port	1.5"	1.5"
Permeate Port	1"	1"

# W40S Series

Low pressure W40S series FRP membrane housing 300 PSI/450PSI (1–4 elements).

High pressure W40S series FRP membrane housing 600 PSI/1000 PSI/1200 PSI (1–4 elements).

**Winder** is certified by ASME, can stand more than 100,000 times of cyclic test & burst test with 6 times of its design pressure.

Applied to complex media and have been used in large & medium-sized projects at home and abroad since 2008.



## Specification

	4" side port / low pressure	4" side port / high pressure
Model	W40S300/450	W40S600/1000/1200
Design Pressure	300/450PSI	600/1000/1200PSI
Cyclic Test	100,000 times	100,000 times
Burst Pressure	6 times	6 times
Elements Quantity	1-4	1-4
Operating pH Range	pH 3-11	pH 3-11
Operating Temperature	-10°C-66°C (14°F – 150°F)	-10°C-66°C (14°F – 150°F)
Feed/Concentration Port	1"	1"
Permeate Port	3/4"	1/4"

# W40E Series

Low pressure W40E series FRP membrane housing 300 PSI/450PSI (1–4 elements).

High pressure W40E series FRP membrane housing 600 PSI/1000 PSI/1200 PSI (1–4 elements).

**Winder** is certified by ASME, can stand more than 100,000 times of cyclic test & burst test with 6 times of its design pressure.

Applied to complex media and have been used in large & medium-sized projects at home and abroad since 2008.



## Specification

	4" end port / low pressure	4" end port / high pressure
Model	W40E300/450	W40S600/1000/1200
Design Pressure	300/450PSI	600/1000/1200PSI
Cyclic Test	100,000 times	100,000 times
Burst Pressure	6 times	6 times
Elements Quantity	1-4	1-4
Operating pH Range	pH 3-11	pH 3-11
Operating Temperature	-10°C-66°C (14°F – 150°F)	-10°C-66°C (14°F – 150°F)
Feed/Concentration Port	3/4"	1"
Permeate Port	1/2"	1/2"

# W25E Series

Built-in membrane elements with size of 14"/21"/40".  
 Low pressure W25E series FRP membrane housing 300 PSI.  
 High pressure W25E series FRP membrane housing 1000 PSI.

**Winder** is certified by ASME, can stand more than 100,000 times of cyclic test & burst test with 6 times of its design pressure.

Applied to complex media and have been used in large & medium-sized projects at home and abroad since 2008.



## Specification

	2.5" end port / low pressure	2.5" end port / high pressure
Model	W25E300	W25E1000
Design Pressure	300PSI	1000PSI
Cyclic Test	100,000 times	100,000 times
Burst Pressure	6 times	6 times
Elements Quantity	2514, 2521, 2540	2514, 2521, 2540
Operating pH Range	pH 3-11	pH 3-11
Operating Temperature	-10°C-66°C (14°F – 150°F)	-10°C-66°C (14°F – 150°F)
Feed/Concentration Port	1/4"	1/4"
Permeate Port	1/4"	1/4"



## DTRO Series

DTRO-80 membrane housing pressure rate:

7.5/9.0/12.0/15.0/20.0 MPa.

Length: 945/1000/1145/1150/1200/1250 mm or customized.

Color: original, white or customized.

**Winder** is certified by ASME, can stand more than 100,000 times of cyclic test & burst test with 6 times of its design pressure.

Applied to complex media environment and have been used in large & medium-sized projects at home and abroad since 2008.



ISO 9001



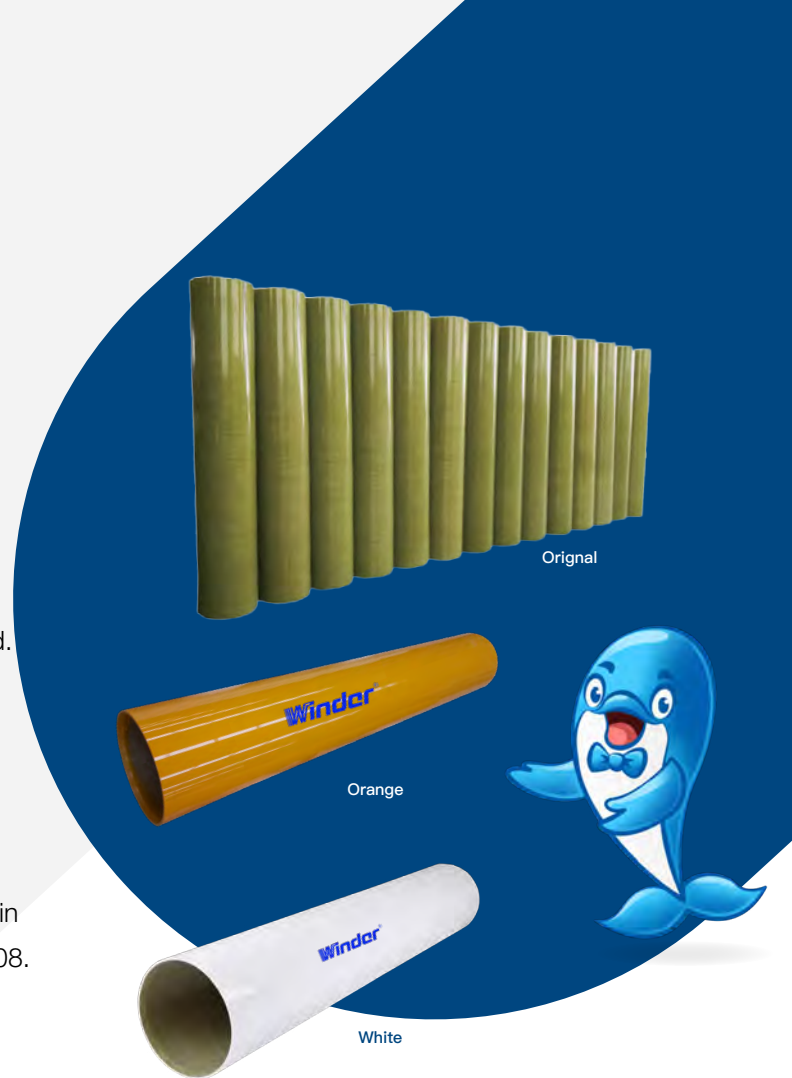
ISO 14001



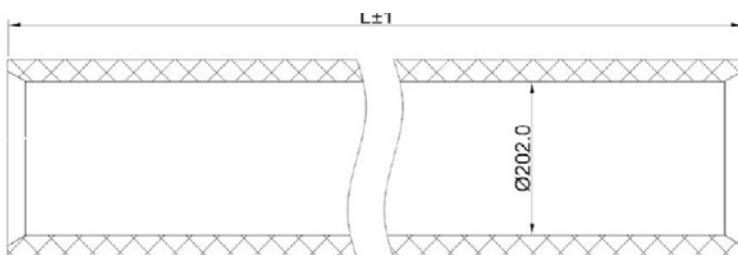
OHSAS 18001



RP



## Specification



Size	7.5Mpa	9.0Mpa	12.0Mpa	15.0Mpa	20.0Mpa
L	945	1000	1150	1200	1250



# Snowate



**Ms Snow Zhao**

snow@snowate.com

snow@membranehousing.org

Mobile: +86-15030811699

(WhatsApp, WeChat, Skype, Viber)